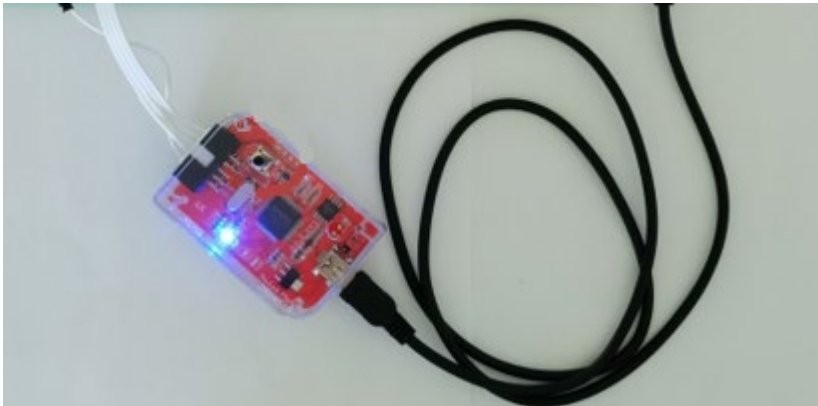




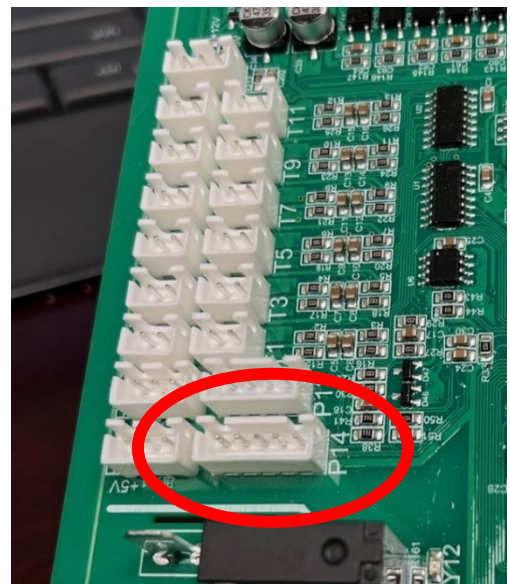
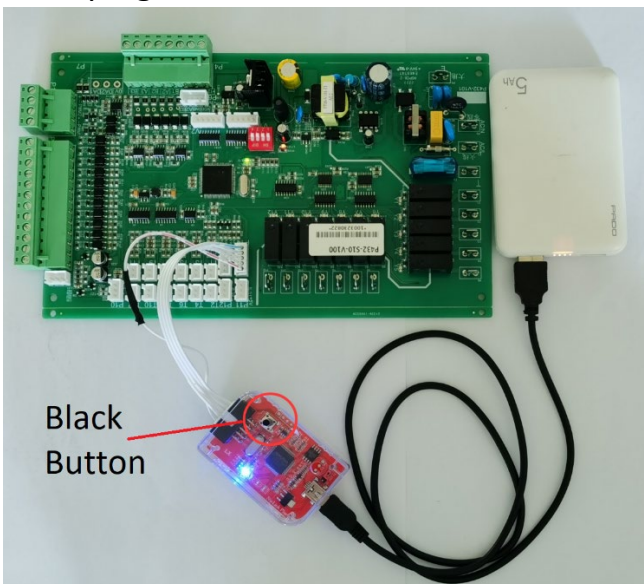
www.chiltrix.com

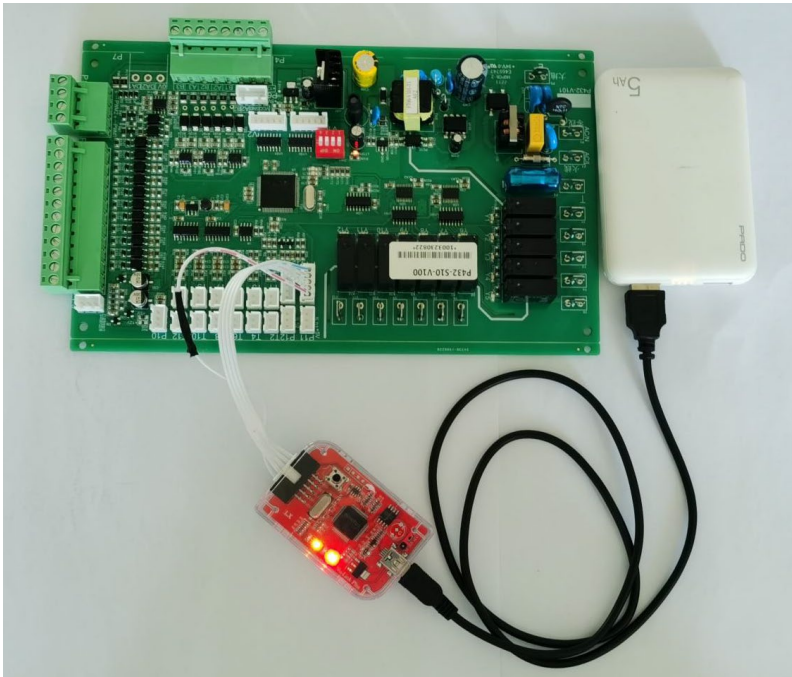
Updating the P432 Main PCB For CX35-1 and CX50-2 (Includes HMI update instructions)

1. We provided you a programmer that already has the main PCB program installed on it. When done, save it. You can reuse this programmer later for updating to a newer version of the software, contact Chiltrix support for instructions on changing to a newer version on the programmer.

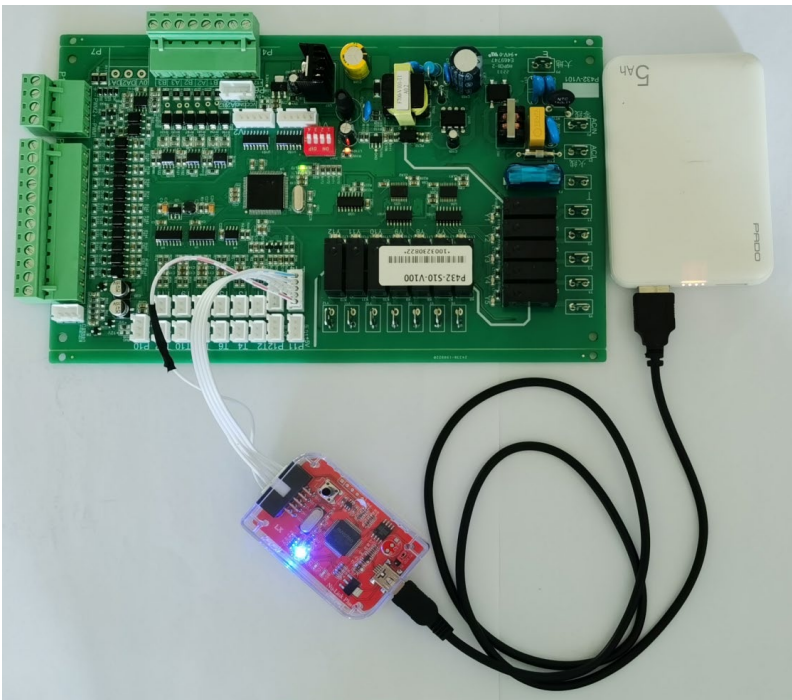


2. Make sure that the CX unit is shut down and the circuit breaker is off.
3. Plug the USB into a laptop or mobile power supply to give the programmer power.
4. Once you see the blue LED light up then the programmer is connected.
5. Then plug the white connector into P14 socket as shown below.





6. Press the black button to program the board and the programmer will light up orange and red.



7. When the light turns blue, the programming finished, unplug the programmer from the laptop.



www.chiltrix.com

HMI Update Instructions CX 35-1/CX 50-2

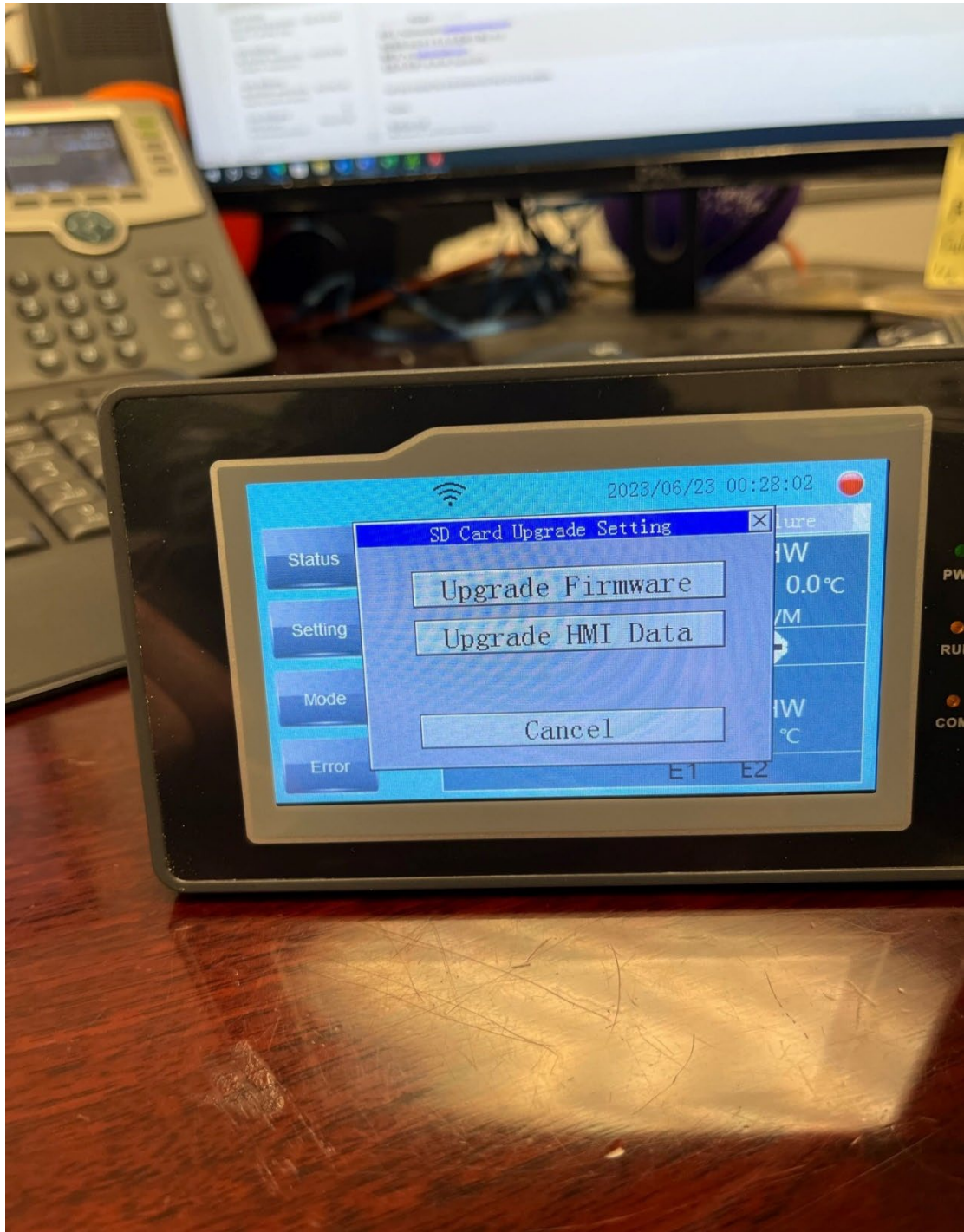
Step 1. If we sent you an Sd card with the software already loaded then Insert the SD card into the SD card slot at the upper right corner of the Controller with power on but with the CX unit shut down. If you are supplying your own SD card then contact Support for the latest file for your CX unit and load the folder labeled "Compile" onto the SD card.



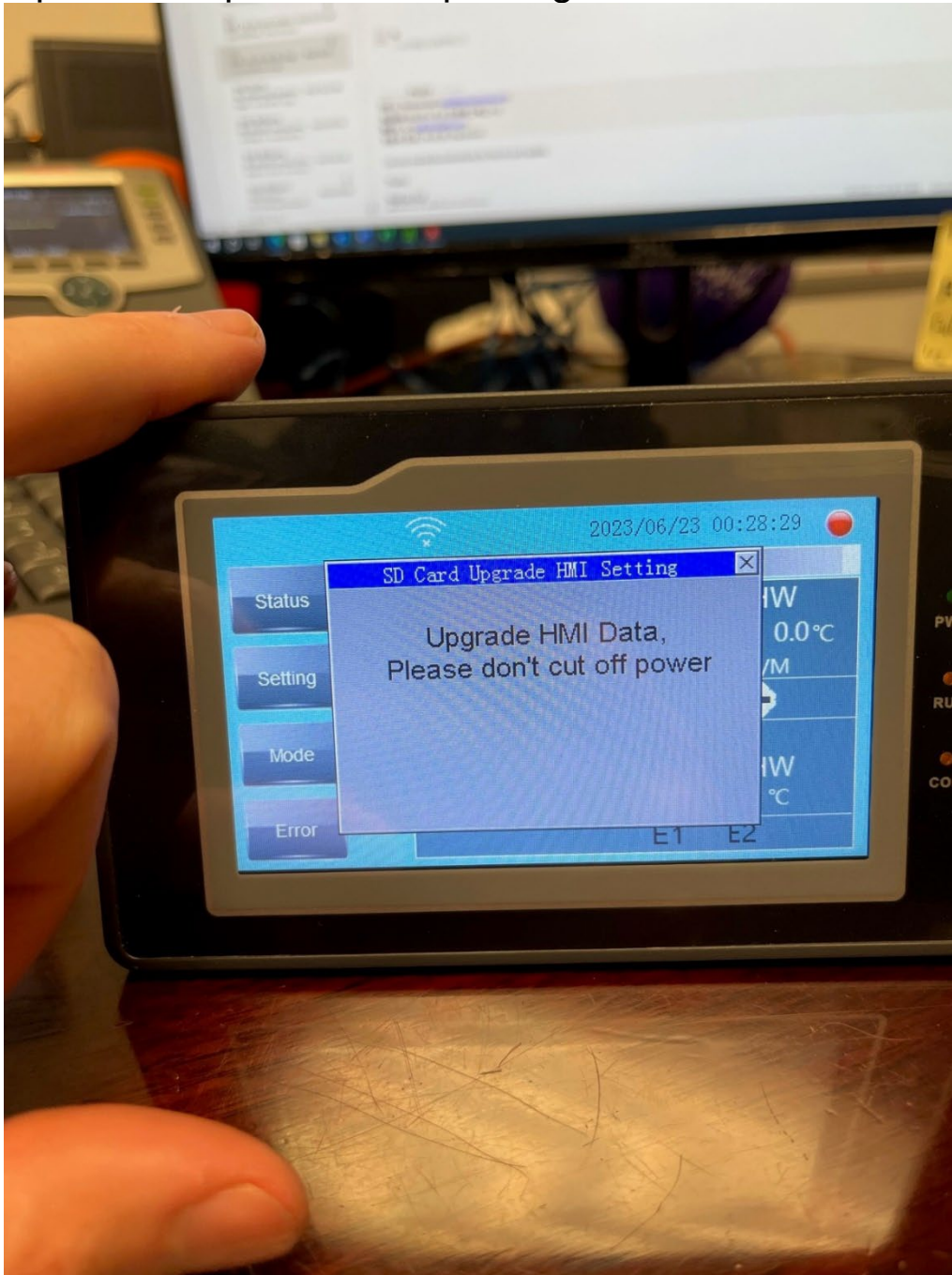
Step 2. When the upgrade prompt appears, click "Upgrade HMI Data"



www.chiltrix.com



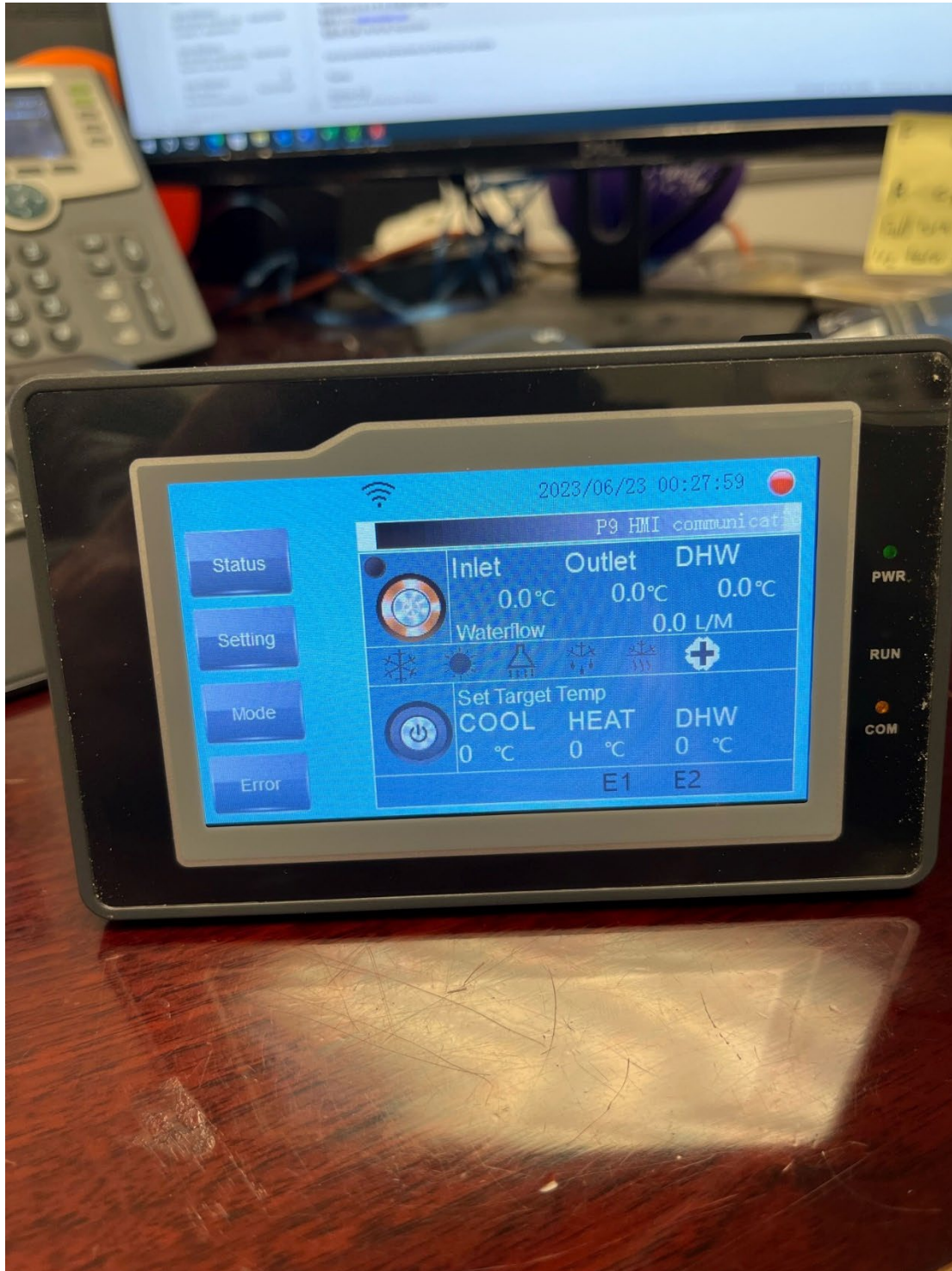
Step 3. In the process of updating, it will take about 1 minute.



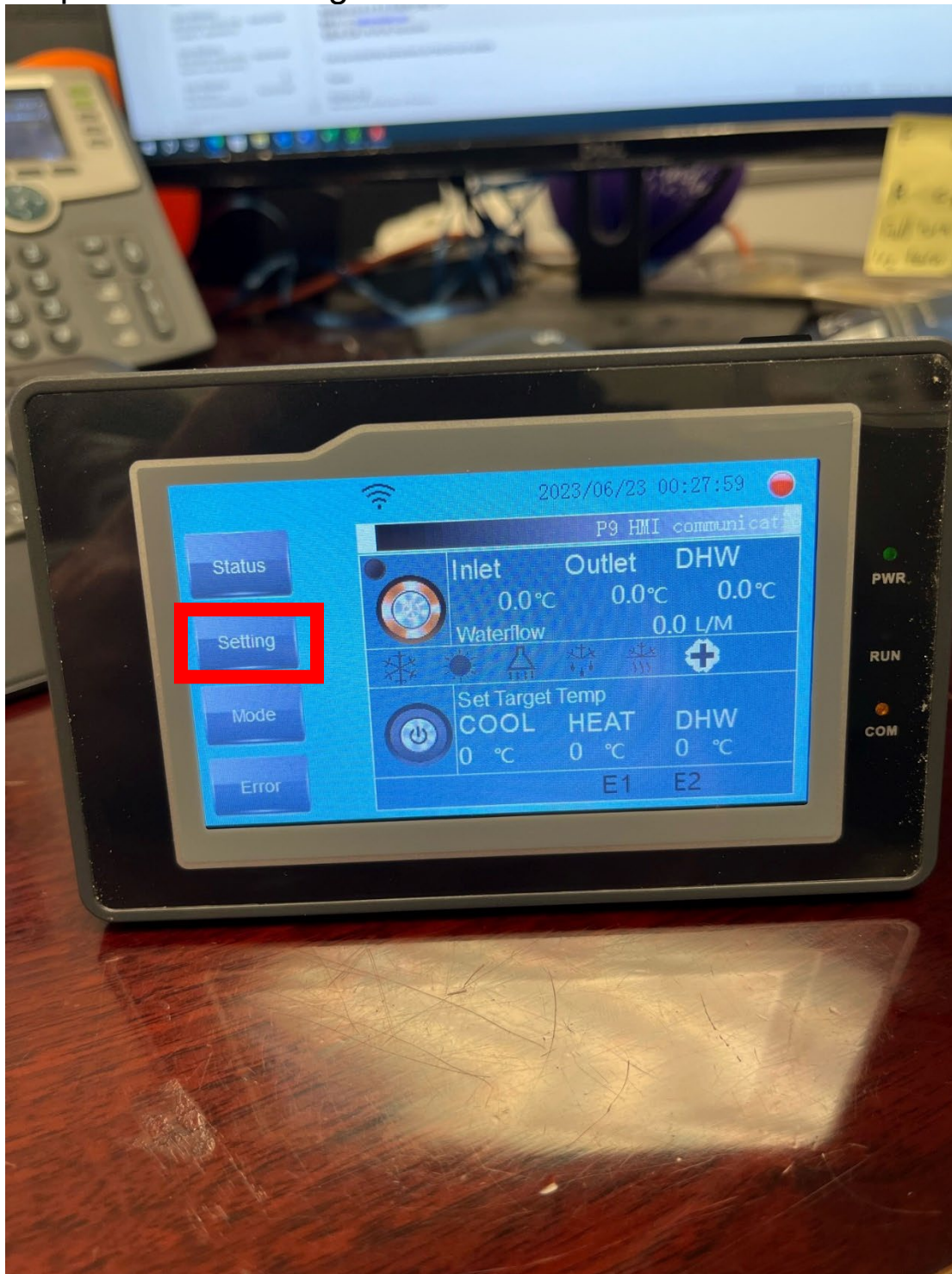


www.chiltrix.com

Step 4. The screen will go black and restart. Remove the SD card after the screen restarts.



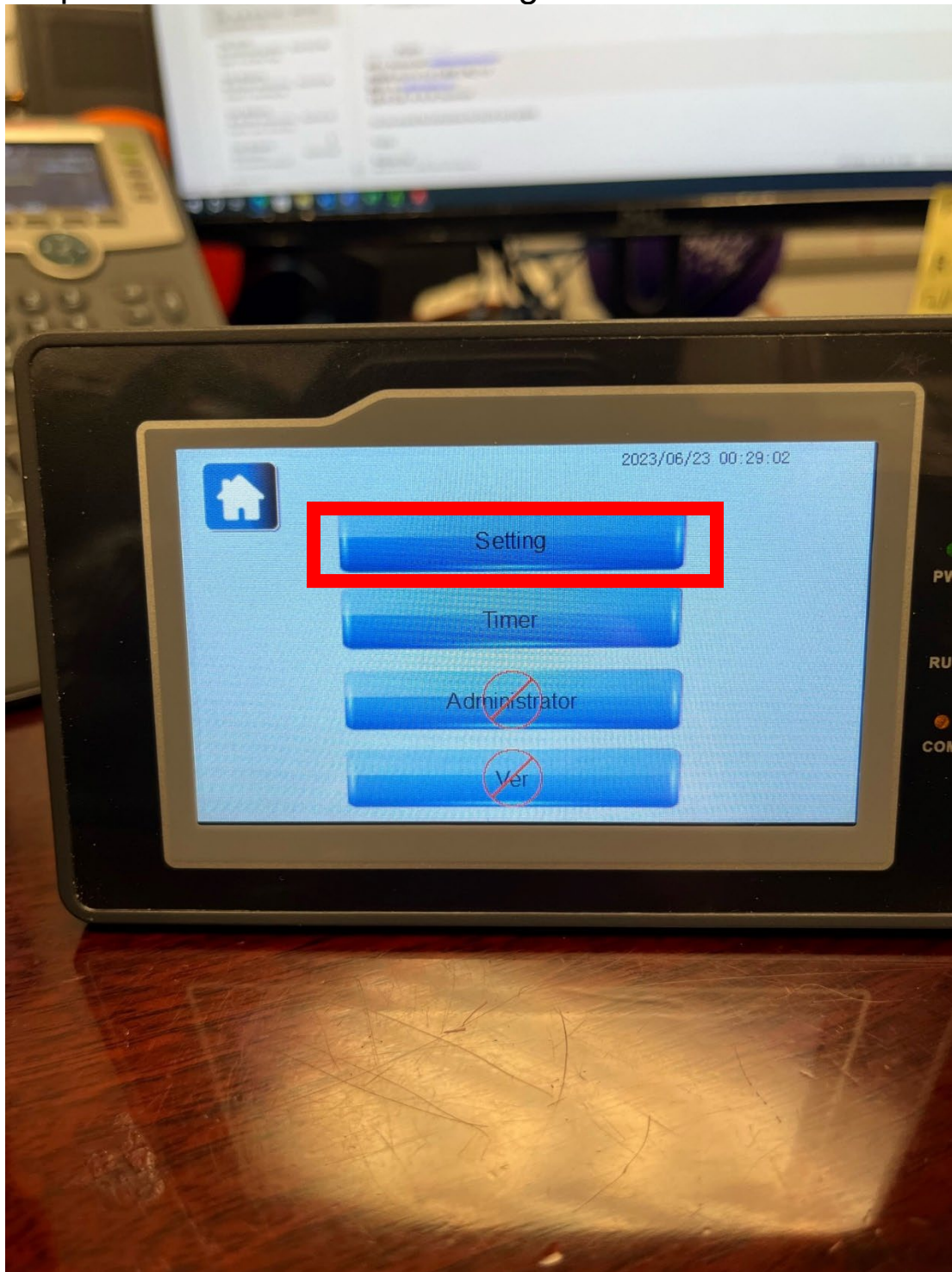
Step 5. Click "Setting".





www.chiltrix.com

Step 6. Continue to click "Setting".





www.chiltrix.com

Step 7. Click "Factory Reset" before startup to initialize the program.

