



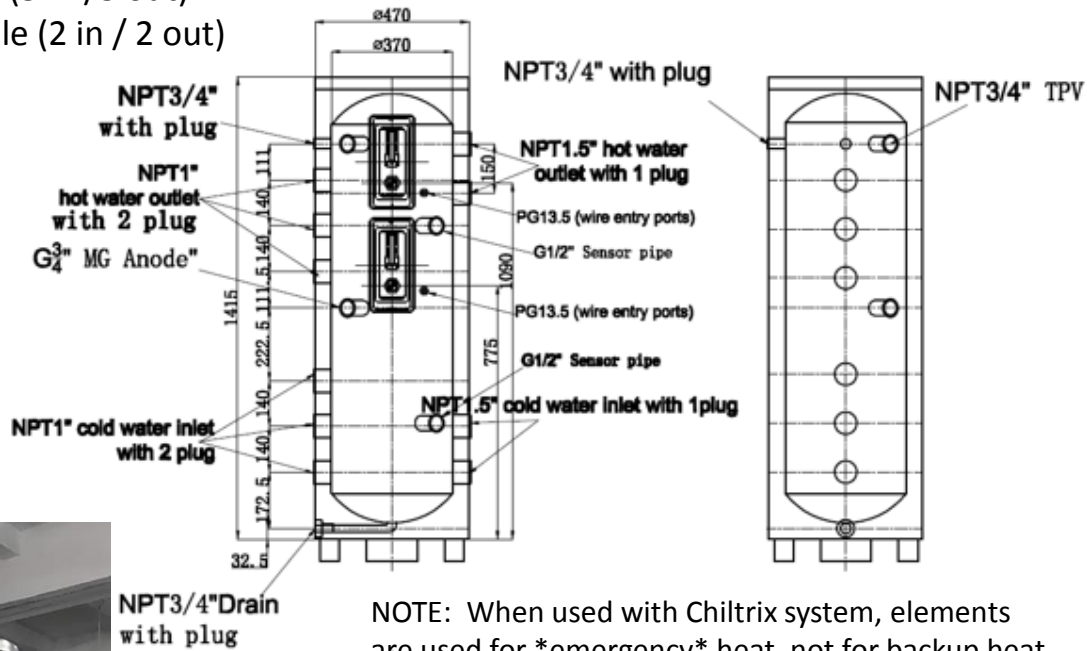
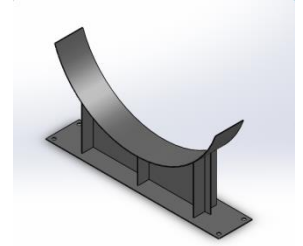
Small Stainless Steel Multi-Function Tanks For Air-To-Water Heat Pumps, Chillers, and Hydronic/Radiant/Floor Heating Systems

Vertical Configuration Model VCT37C

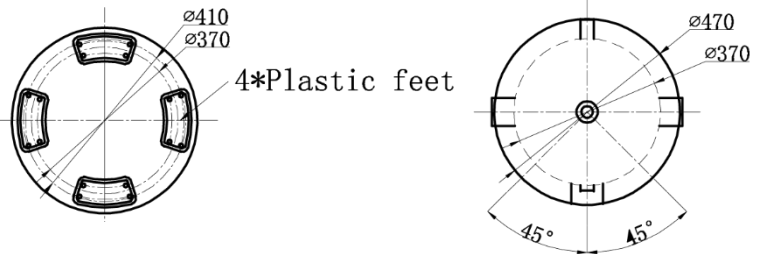
- 37 gallons/150 liters
- Stainless Steel Inner Tank w/ Stainless Steel Jacket
- 2" Polyurethane Insulation
- 2x Element ports 1" NPSM
- 2x Element/Thermostat Cavities w/ Covers
- Supports up to 2x 5500w Elements
- 6x Side 1 Ports 1" NPT Female (3 in / 3 out)
- 4x Side 2 Ports 1.5" NPT Female (2 in / 2 out)
- 2x Drain Ports 3/4" NPT Female
- 2x 1/2" Sensor Wells
- 1x Anode Port w/ Anode
- Diameter 18.5"
- Height 58.5"
- Weight 74 Lbs.

Buffer / Multi-Purpose
All-Stainless Steel Tanks

Optional Cradle
For Horizontal
Application : Specify
Model HCT37



NOTE: When used with Chiltrix system, elements are used for *emergency* heat, not for backup heat. For backup heat, see Chiltrix V18.



Optional Cradle Mount

