

IPM324-VX-30AH-TNB220

- (T12)5K resistor (Indoor temp sensor)
- (T11) Plate heat exchanger inlet temp sensor
- (T10)5K resistor(Solar water temp sensor)
- (T9) Water outlet temp sensor
- (T8) Water inlet temp sensor
- (T7)5K resistor(DHW temp sensor)
- (T6) Suction temperature sensor
- (T5)5K resistor(Water source outlet temp sensor)
- (T4)5K resistor water source inlet temp sensor
- (T3) Ambient temperature sensor
- (T2)Coil temperature sensor
- (T1) Discharge temperature sensor

Wires

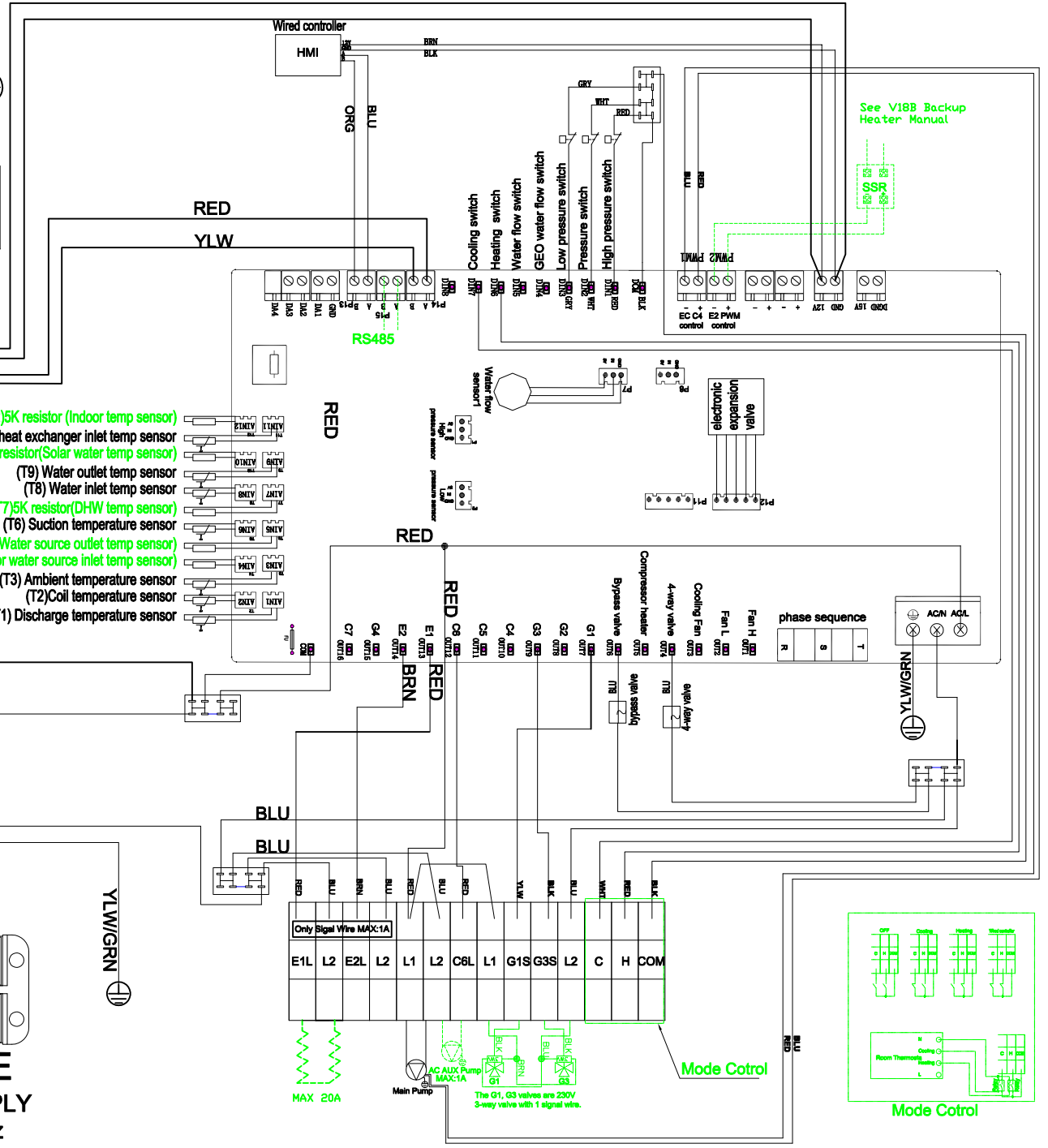
BRN	Brown	WHT	White
RED	Red	GRY	Grey
BLK	Black	BLU	Blue
ORG	Orange	YLW	Yellow
PIN	Pink	PUR	Purple
YLW/GRN	Yellow/Green		

L1 L2 PE
POWER SUPPLY
 230V/1/60Hz

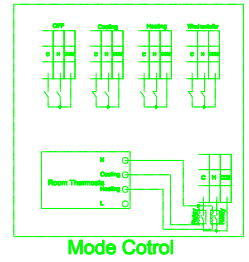
All Dotted Parts are connected by user during installation

<https://www.chiltrix.com/>

Terminal Block Sticker [E1L L2 E2L L2 L1 L2 C8L L1 G1S G3S L2 C H COM]



See V18B Backup Heater Manual



Mode Control

Mode Control